

RECEIVED
COUNTY CLERK
FINANCIAL SERVICES
HALLS COUNTY, FL

CHANGE ORDER APPROVAL FORM

JAN 14 2 58

PROJECT: Citrona Drive @ Sadler Road
Intersection Improvements Project

CHANGE ORDER NUMBER: 01

DATE: 01/03/11

CONTRACT NUMBER: CM1604

TO CONTRACTOR: United Brothers Development Corporation

Reason for Change Order: Due to drop off conditions associated with the EOP elevations in relation to the proposed MES flow lines, it was determined that Type "C" Inlets would be required for safety. Add 2 each - Type "C" Inlets, Modified and Delete 2 each 12"x18" MES due to drainage and elevation tie-in grades.

Original Contract Sum.....	\$	<u>177,820.90</u>
Net Change by Previous Change Order/Supplemental Agreement.	\$	<u>.00</u>
Contract Sum Prior to This Change Order.....	\$	<u>177,820.90</u>
Amount of This Change Order (Add/Deduct).....	\$	<u>6,558.17</u>
New Contract Sum Including this Change Order.....	\$	<u>184,379.07</u>

11 JAN 20 PM 2:19
COUNTY CLERK

APPROVED BY: [Signature]
Project Manager (Department Head)

DATE: 1/18/11

APPROVED BY: [Signature]
Contract Manager

DATE: 1/20/11

APPROVED BY: [Signature]
Director of Office of Management & Budget

DATE: 1-21-11

APPROVED BY: [Signature]
County Manager

DATE: 1/21/11

2011 JAN 19 PM 4:18

RECEIVED
CONTRACT MANAGEMENT

41151541-563100 SRCB ✓

SECTION 00 63 63

CHANGE ORDER REQUEST FORM

RECEIVED
CONTRACT MANAGEMENT

(Citrona Dr. @ Sadler Rd.)

No. 1

2011 JAN 12 PM 2:28

PROJECT

DATE OF ISSUANCE 1/3/11

EFFECTIVE DATE 1/3/11

NASSAU COUNTY BOARD OF COUNTY COMMISSIONERS

COUNTY Contract / Purchase Order No.: Bid No. NC 10-014/P.O. No. 10000597-00

CONTRACTOR United Brothers Development Corporation ENGINEER / ARCHITECT: PBS&J

You are directed to make the following changes in the Contract Documents.

Description: Add 2 EA. - Type 'C' Inlets, Modified and Delete 2 EA. 12" x 18" MES due to drainage and elevation tie-in grades.

Reason for Change Order: Due to drop off conditions associated with the EOP elevations in relation to the proposed MES flow lines, it was determined that Type 'C' Inlets would be required for safety.

Attachments: (List documents supporting change) Contract Bid Tab, E-mail correspondence, Contractor Cost Proposal, Statewide Average cost comparison, approved Shop Drawings.

<p>CHANGE IN CONTRACT PRICE:</p> <p>Original Contract Price</p> <p><u>\$ 177,820.90</u></p>	<p>CHANGE IN CONTRACT TIMES:</p> <p>Original Contract Times</p> <p>Substantial Completion: <u>124</u></p> <p>Ready for Final Payment: <u>169</u> (days or dates)</p>
<p>Net change from previous Change Orders No. <u>n/a</u> to No. <u>n/a</u></p> <p><u>\$ 6,558.17</u></p>	<p>Net change from previous Change Orders No. <u>n/a</u> to No. <u>n/a</u></p> <p><u>N/A</u> (days)</p>
<p>Contract Price prior to this Change Order</p> <p><u>\$ 177,820.90</u></p>	<p>Contract Times Prior to this Change Order</p> <p>Substantial Completion: <u>124</u></p> <p>Ready for Final Payment: <u>169</u> (days or dates)</p>
<p>Net Increase (decrease) of this Change Order</p> <p><u>\$ 6,558.17</u></p>	<p>Net Increase (decrease) of this Change Order</p> <p><u>0</u> (days)</p>
<p>Contract Price with all approved Change Orders</p> <p><u>\$ 184,379.07</u></p>	<p>Contract Times with all approved Change Orders</p> <p>Substantial Completion: <u>124</u></p> <p>Ready for Final Payment: <u>169</u> (days or dates)</p>

RECOMMENDED:

By: [Signature]
Engineer/Architect (Authorized Signature)

Date: 12/17/10

APPROVED:

By: [Signature]
COUNTY (Authorized Signature)

Date: 12/30/10

ACCEPTED:

By: [Signature]
Contractor (Authorized Signature)

Date: 1/3/2011

PROJECT: CITRONA DRIVE @ SADLER ROAD - INTERSECTION IMPROVEMENT PROJECT
 LOCATION: FERNANDINA BEACH, FLORIDA
 BID NUMBER: NC10-014
 BID OPENING DATE: Thursday, June 3, 2010

		ESTIMATE QUANTITY	UNIT	ENGINEER'S ESTIMATE		UNITED BROTHERS		AVERAGE UNIT PRICE	
				UNIT PRICE	TOTAL AMOUNT	UNIT PRICE	TOTAL AMOUNT		
1	101-1	MOBILIZATION	1	LS	\$9,483.49	\$9,483.49	\$12,200.00	\$12,200.00	\$19,227.23
2	102-1	MAINTENANCE OF TRAFFIC	1	LS	\$4,741.74	\$4,741.74	\$5,637.63	\$5,637.63	\$13,220.52
3	104-10-2	HAY BALES	9	EA	\$6.93	\$62.37	\$60.51	\$544.59	\$25.50
4	104-13-1	STAKED SILT FENCE, TYPE III	1192	LF	\$0.91	\$1,084.72	\$1.24	\$1,478.08	\$1.20
5	110-1-1	CLEARING & GRUBBING	1	LS	\$11,036.00	\$11,036.00	\$1,580.42	\$1,580.42	\$11,026.80
6	120-2-2	BORROW EXCAVATION, TRUCK MEASURE	75	CY	\$3.60	\$270.00	\$8.33	\$624.75	\$27.18
7	120-71	REGULAR EXCAVATION (3' PROJECTS ONLY)	8	CY	\$9.73	\$77.84	\$22.57	\$180.56	\$489.70
8	160-4	12" TYPE B STABILIZATION	1356	SY	\$1.95	\$2,644.20	\$4.32	\$5,857.92	\$6.01
9	285-704	OPTIONAL BASE (BASE GROUP)6" LIMEROCK(LBR 100)	848	SY	\$5.75	\$4,876.00	\$12.00	\$10,176.00	\$14.89
10	327-70-1	MILLING EXISTING ASPHALT PAVEMENT (1" AVG. DEPTH)	136	SY	\$1.21	\$164.56	\$2.58	\$348.16	\$22.34
11	327-70-11	MILLING EXIST. ASPHL. PAVT. (2 1/4" AVG DEPTH)	2045	SY	\$1.21	\$2,474.45	\$3.32	\$6,789.40	\$2.98
12	334-1-12	SUPERPAVE ASPH. CONC. (SP 9.5)(TRAFFIC B)	444.2	TN	\$67.47	\$29,970.17	\$130.49	\$57,963.66	\$134.35
13	337-7-30	ASPH. CONC. FRICTION COURSE, TRAFFIC B, FC-9.5 (RUBBER)	143.1	TN	\$89.10	\$12,750.21	\$180.94	\$25,892.51	\$189.72
14	341-70	ASPHALT RUBBER MEMBRANE INTERLAYER	1810	SY	\$3.99	\$7,221.90	\$10.75	\$19,457.50	\$10.77
15	430-174-201	PIPE CULV. OPT MATL. OTHER-ELLIP/ARCH, 0-24" SD	137	LF	\$41.19	\$5,643.03	\$49.74	\$6,814.38	\$43.05
16	430-982-625	MES. OPTIONAL ROUND, 12"x18" CD	2	EA	\$835.30	\$1,670.60	\$1,296.55	\$2,593.10	\$1,092.91
17	520-1-8	CONCRETE CRUB & GETTER, SPECIAL (18" MAIMI TYPE)	284	LF	\$22.41	\$6,364.44	\$9.10	\$2,584.40	\$11.10
18	520-1-10	CONCRETE CURB & GUTTER, TYPE F	39	LF	\$12.77	\$498.03	\$9.09	\$354.51	\$13.25
19	520-1-11	CONCRETE CURB & GUTTER, TYPE RIBBON	64	LF	\$12.77	\$817.28	\$10.09	\$645.78	\$11.86
20	520-3	CONCRETE VALLEY GUTTER	66	LF		\$0.00	\$14.27	\$941.82	\$14.40
21	522-1	CONCRETE SIDEWALK, 4" THICK	77	SY	\$12.77	\$983.29	\$34.47	\$2,654.19	\$33.38
22	570-1-1	PERFORMANCE TURF	410	SY	\$0.48	\$196.80	\$0.34	\$139.40	\$1.30
23	570-1-2	PERFORMANCE TURF, SOD	466	SY	\$1.67	\$778.22	\$2.31	\$1,076.46	\$3.05
24	630-1-12	CONDUIT-SIGNALS, F&I, UNDERGROUND	11	LF	\$3.98	\$43.78	\$8.00	\$88.00	\$19.02
25	660-1-12	LOOP ASSEMBLY, F&I TYPE F	2	AS	\$870.26	\$1,740.52	\$450.00	\$900.00	\$684.35
26	700-20-40	SINGLE POST SIGN (RELOCATE)	1	AS	\$124.41	\$124.41	\$50.00	\$50.00	\$208.42
27	706-3	RETRO-REFLECTIVE PAVEMENT MARKER (WHITE/RED)	18	EA	\$3.18	\$57.24	\$5.00	\$90.00	\$5.18
28	706-3	RETRO-REFLECTIVE PAVEMENT MARKER (YELLOW/YELLOW)	83	EA	\$3.18	\$263.94	\$5.00	\$415.00	\$5.18
29	710-11-111	PAINTED PAVEMENT MARKINGS, STD, WHITE, SOLID (6")	9	NM	\$2,994.78	\$2,695.30	\$1,320.00	\$1,188.00	\$1,364.64
30	710-11-123	PAINTED PAVEMENT MARKINGS, STD, WHITE, SOLID (12")	615	LF	\$2.01	\$1,236.15	\$2.00	\$1,230.00	\$1.93
31	710-11-125	PAINTED PAVEMENT MARKINGS, STD, WHITE, SOLID (24")	120	LF	\$4.06	\$487.20	\$3.00	\$360.00	\$2.95
32	710-11-170	PAINTED PAVEMENT MARKINGS, STD, WHITE, ARROW	12	EA	\$61.38	\$736.58	\$40.00	\$480.00	\$39.86
33	710-11-211	PAINTED PAVEMENT MARKINGS, STD, YELLOW, SOLID (18")	.96	NM	\$3,194.20	\$3,066.43	\$1,320.00	\$1,267.20	\$1,362.57
34	710-11-224	PAINTED PAVEMENT MARKINGS, STD, YELLOW, SOLID (6")	375	LF	\$4.05	\$1,518.75	\$2.50	\$937.50	\$2.50
35	711-11-111	THERMOPLASTIC, STD, WHITE, SOLID (6")	3	NM	\$4,725.00	\$1,417.50	\$4,500.00	\$1,350.00	\$4,549.59
36	711-11-123	THERMOPLASTIC, STD, WHITE, SOLID (12")	205	LF	\$3.15	\$645.75	\$3.00	\$615.00	\$2.98
37	710-11-125	THERMOPLASTIC, STD, WHITE, SOLID (24")	40	LF	\$5.25	\$210.00	\$5.00	\$200.00	\$5.18
38	711-11-170	THERMOPLASTIC, STD, WHITE, ARROW	4	EA	\$78.75	\$315.00	\$75.00	\$300.00	\$75.78
39	711-11-211	THERMOPLASTIC, STD, YELLOW, SOLID (6")	.32	NM	\$4,725.00	\$1,512.00	\$4,500.00	\$1,440.00	\$4,549.59
40	711-11-224	THERMOPLASTIC, STD, YELLOW, SOLID (18")	125	LF	\$3.15	\$393.75	\$3.00	\$375.00	\$3.11
TOTAL BASE BID (ITEMS 1 TO 23)						\$120,273.63	\$177,820.90		

Contract Management
 Prepared by: Charlotte J. Young
 Report Date: 01/28/10

Carrie Smithheart

Subject: FW: Citrona Dr. @ Sadler Rd. - Drainage modification quote & Drawings**Attachments:** M&A005.PDF**From:** Dan McCranie [mailto:dan@mccranie-engineers.com]**Sent:** Tuesday, December 14, 2010 10:06 AM**To:** Carrie Smithheart; MEHolcomb@pbsj.com; 'Kadi, Sam E'**Cc:** Kent Ponder; 'Scott Herring'; 'Shelley Caldwell'; 'Jonathan Page'**Subject:** RE: Citrona Dr. @ Sadler Rd. - Drainage modification quote & Drawings

Here are the shop drawings. The downstream section is approved. I want to add a slot on the upstream section to catch the small amount of flow from the swale to the south. That will also be the way that the water in the gutter will flow into the system.

Dan

Daniel I. McCranie, P.E.

President

McCranie & Associates, Inc.

904-335-8685

From: Carrie Smithheart [mailto:SmithheartC@etminc.com]**Sent:** Tuesday, December 14, 2010 9:56 AM**To:** Dan McCranie; MEHolcomb@pbsj.com; Kadi, Sam E**Cc:** Kent Ponder; Scott Herring; Shelley Caldwell; Jonathan Page**Subject:** RE: Citrona Dr. @ Sadler Rd. - Drainage modification quote & Drawings

Thanks,

Carrie Smithheart

CEI/ Project Administrator



Direct: 904-642-8990 Fax: 904-642-4165

Cell: 904-509-9007 Email: SmithheartC@etminc.com

This message may contain confidential information. If you have received this message by mistake, please inform the sender by sending an e-mail reply. At the same time please delete the message and any attachments from your system without making, distributing or retaining any copies. Although all our e-mail messages and any attachments upon sending are automatically virus scanned we assume no responsibility for any loss or damage arising from the receipt and/or use.

From: Dan McCranie [mailto:dan@mccranie-engineers.com]**Sent:** Tuesday, December 14, 2010 9:51 AM**To:** Carrie Smithheart; MEHolcomb@pbsj.com; 'Kadi, Sam E'**Cc:** Kent Ponder; 'Scott Herring'; 'Shelley Caldwell'; 'Jonathan Page'**Subject:** RE: Citrona Dr. @ Sadler Rd. - Drainage modification quote & Drawings

That sounds good. I'll get you the shop drawings ASAP.

Daniel I. McCranie, P.E.

12/14/2010

President
 McCranie & Associates, Inc.
 904-335-8685

From: Carrie Smithheart [mailto:SmithheartC@etminc.com]
Sent: Tuesday, December 14, 2010 9:49 AM
To: Dan McCranie; MEHolcomb@pbsj.com; Kadi, Sam E
Cc: Kent Ponder; Scott Herring; Shelley Caldwell; Jonathan Page
Subject: RE: Citrona Dr. @ Sadler Rd. - Drainage modification quote & Drawings

Dan,

The exfiltration pipe proposal is due to the existing flow of the north ditch. If you look at the plans the existing MES at ~ sta. 26+70 has an invert of 17.28. The flow line of the originally proposed MES is 16.70. No matter how you grade the ditch the water will pool somewhere. The exfiltration line is proposed in an effort to help percolate out any residual water.

Carrie Smithheart
 CEI/ Project Administrator



Direct: 904-642-8990 Fax: 904-642-4165
 Cell: 904-509-9007 Email: SmithheartC@etminc.com

This message may contain confidential information. If you have received this message by mistake, please inform the sender by sending an e-mail reply. At the same time please delete the message and any attachments from your system without making, distributing or retaining any copies. Although all our e-mail messages and any attachments upon sending are automatically virus scanned we assume no responsibility for any loss or damage arising from the receipt and/or use.

From: Jonathan Page [mailto:jpage@nassaucountyfl.com]
Sent: Monday, December 13, 2010 10:13 AM
To: Carrie Smithheart; MEHolcomb@pbsj.com; Kadi, Sam E; Dan McCranie
Cc: Kent Ponder; Scott Herring; Shelley Caldwell
Subject: RE: Citrona Dr. @ Sadler Rd. - Drainage modification quote & Drawings

Fine with me. I understand the need.

Thanks,

From: Carrie Smithheart [mailto:SmithheartC@etminc.com]
Sent: Monday, December 13, 2010 10:07 AM
To: MEHolcomb@pbsj.com; Kadi, Sam E; Dan McCranie
Cc: Jonathan Page; Kent Ponder
Subject: Citrona Dr. @ Sadler Rd. - Drainage modification quote & Drawings
Importance: High

Michael/Sam/Dan,

Attached are the proposals for the drainage modifications necessary on the above referenced project. After further review of field conditions United Brothers (UBD) has requested and submitted a proposal to install modified type C inlets in lieu of the U-Walls. We agree that this would most likely be a better alternative and as you will see more cost effective.

12/14/2010

If you agree, please review the attached shop drawings for the inlets and let me know as soon as possible whether or not they are okay as submitted or some changes need to be made.

Jonathan,

I have included two statewide averages for the purpose of acknowledging the extreme shifts in pricing over the last year or so. With this, I believe the proposal submitted by UBD for the inlets alternative is a reasonable price, and if accepted by the EOR and with your concurrence, I will begin to process the CO.

Thanks,

Carrie Smithheart

CEI/ Project Administrator



Direct: 904-642-8990 Fax: 904-642-4165
Cell: 904-509-9007 Email: SmithheartC@etmnc.com

This message may contain confidential information. If you have received this message by mistake, please inform the sender by sending an e-mail reply. At the same time please delete the message and any attachments from your system without making, distributing or retaining any copies. Although all our e-mail messages and any attachments upon sending are automatically virus scanned we assume no responsibility for any loss or damage arising from the receipt and/or use.

12/14/2010

UNITED BROTHERS DEVELOPMENT CORP.

Detail	Description	Quantity	Unit	Unit Cost	Total
2 INSTALL C-INLET IN LIEU OF MES					
	C-INLET W TRAFFIC GRATE	2.00	EA	\$ 1,201.00	\$ 2,402.00
	2 CONCRETE 3000 PSI	0.66	CY	\$ 85.00	\$ 56.10
	2 RRROCK	4.00	CY	\$ 47.50	\$ 190.00
	2 CON BRK	2.00	EA	\$ 65.00	\$ 130.00
	307 EXCAVATOR	8.00	HR	\$ 55.72	\$ 445.76
	UTILITY LOADER 200	8.00	HR	\$ 53.39	\$ 427.12
	UTILITY FORMAN	8.00	MH	\$ 73.08	\$ 584.64
	PIPELAYER	8.00	MH	\$ 56.55	\$ 452.40
	TAILMAN	8.00	MH	\$ 45.83	\$ 366.64
	OPERATOR PIPE CREW	8.00	MH	\$ 52.76	\$ 422.08
	FLAT BED DELIVERY TRUCK	8.00	HR	\$ 65.00	\$ 520.00
	SUBTOTAL				\$ 5,996.74
ENCASE M.E.S. IN LIEU OF REMOVAL					
	2 CONCRETE 3000 PSI	1.00	LS		
	2 CONCRETE 3000 PSI	2.00	CY	\$ 85.00	\$ 170.00
	2 FILTER CLOTH MENBRANE	1.00	LS	\$ 45.00	\$ 45.00
	D5 DOZER	3.00	HR	\$ 57.20	\$ 171.60
	307 EXCAVATOR	3.00	HR	\$ 55.72	\$ 167.16
	UTILITY LOADER 200	3.00	HR	\$ 53.39	\$ 160.17
	UTILITY FORMAN	3.00	MH	\$ 73.08	\$ 219.24
	PIPELAYER	3.00	MH	\$ 56.55	\$ 169.65
	TAILMAN	3.00	MH	\$ 45.83	\$ 137.49
	OPERATOR PIPE CREW	3.00	MH	\$ 52.76	\$ 158.28
	SUBTOTAL				\$ 1,398.59
CONCRETE FLUME					
	2 CONCRETE 3000 PSI	3.25	SY		
	2 CONCRETE 3000 PSI	1.30	CY	\$ 85.00	\$ 110.50
	307 EXCAVATOR	2.00	HR	\$ 55.72	\$ 111.44
	UTILITY LOADER 200	2.00	HR	\$ 53.39	\$ 106.78
	UTILITY FORMAN	2.00	MH	\$ 73.08	\$ 146.16
	PIPELAYER	2.00	MH	\$ 56.55	\$ 113.10
	TAILMAN	2.00	MH	\$ 45.83	\$ 91.66
	OPERATOR PIPE CREW	2.00	MH	\$ 52.76	\$ 105.52
	SUBTOTAL				\$ 785.16
EXFILLTRATION DRAIN					
	6" SLOTTED PIPE W/ ENDCAP	20.00	LF		
	6" SLOTTED PIPE W/ ENDCAP	20.00	LF	\$ 2.25	\$ 45.00
	2 FILTER CLOTH MENBRANE	1.00	LS	\$ 45.00	\$ 45.00
	2 RRROCK	7.50	CY	\$ 47.50	\$ 356.25
	FLAT BED DELIVERY TRUCK	2.00	HR	\$ 65.00	\$ 130.00
	D5 DOZER	1.00	HR	\$ 57.20	\$ 57.20
	307 EXCAVATOR	1.00	HR	\$ 55.72	\$ 55.72
	UTILITY LOADER 200	1.00	HR	\$ 53.39	\$ 53.39
	UTILITY FORMAN	1.00	MH	\$ 73.08	\$ 73.08
	PIPELAYER	1.00	MH	\$ 56.55	\$ 56.55
	TAILMAN	1.00	MH	\$ 45.83	\$ 45.83
	OPERATOR PIPE CREW	1.00	MH	\$ 52.76	\$ 52.76
	SUBTOTAL				\$ 970.78
	MES, OPTIONAL ROUND, 12"X18" CD	-2	EA	\$ 1,296.55	\$ (2,593.10)
	TOTAL				\$ 6,558.17

Accepted
(W)

Florida Department of Transportation
 Item Average Unit Cost
 From 2010/05/01 to 2010/10/31

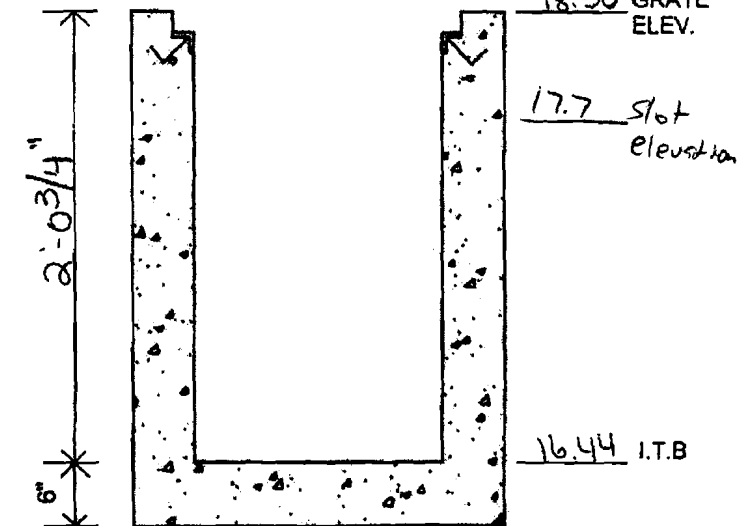
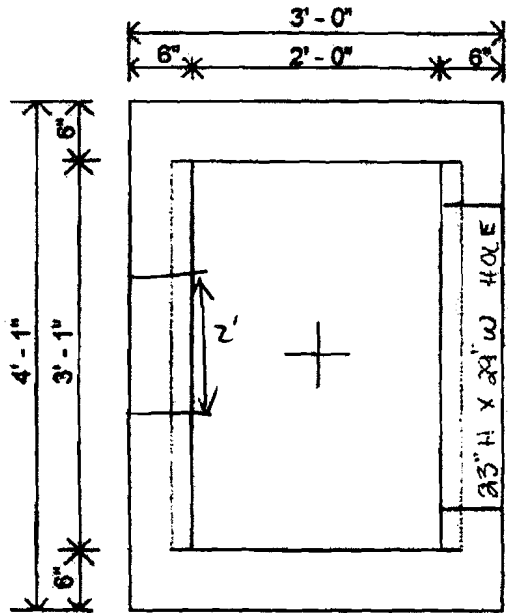
Contract Type: CC STATEWIDE
 Displaying: VALID ITEMS WITH HITS
 From: 0102 1 To: 9999999

Item	No. of Conts	Weighted Average	Total Amount	Total Quantity	Unit Meas	Obs?	Description
0425 1421	2	\$6,512.61	\$45,588.30	7.000	EA	N	INLETS, CURB, TYPE J-2, <10'
0425 1451	5	\$4,067.47	\$89,484.40	22.000	EA	N	INLETS, CURB, TYPE J-5, <10'
0425 1452	3	\$4,707.27	\$51,780.00	11.000	EA	N	INLETS, CURB, TYPE J-5, >10'
0425 1461	7	\$4,475.23	\$44,752.28	10.000	EA	N	INLETS, CURB, TYPE J-6, <10'
0425 1471	4	\$2,695.06	\$21,560.44	8.000	EA	N	INLETS, CURB, TYPE 7, <10'
0425 1481	1	\$3,050.00	\$18,300.00	6.000	EA	N	INLETS, CURB, TYPE 8, <10'
0425 1501	1	\$4,500.00	\$9,000.00	2.000	EA	N	INLETS, DT BOT, TYPE A, <10'
0425 1511	5	\$2,994.68	\$230,590.00	77.000	EA	N	INLETS, DT BOT, TYPE B, <10'
0425 1512	1	\$3,500.00	\$3,500.00	1.000	EA	N	INLETS, DT BOT, TYPE B, >10'
0425 1513	3	\$3,790.20	\$18,951.00	5.000	EA	N	INLETS, DT BOT, TYPE B, J BOT, <10'
0425 1515	2	\$2,181.82	\$24,000.00	11.000	EA	N	INLETS, DT BOT, TYPE B, PARTIAL
0425 1521	18	\$1,765.34	\$250,677.90	142.000	EA	N	INLETS, DT BOT, TYPE C, <10'
0425 1523	1	\$2,112.39	\$2,112.39	1.000	EA	N	INLETS, DT BOT, TYPE C, J BOT, <10'
0425 1525	4	\$1,275.30	\$6,376.52	5.000	EA	N	INLETS, DT BOT, TYPE C, PARTIAL
0425 1529	2	\$1,896.55	\$3,793.09	2.000	EA	N	INLETS, DT BOT, TYPE C, MODIFY
0425 1531	4	\$1,394.60	\$34,864.93	25.000	EA	N	INLETS, DT BOT, TYPE C, MOD, <10'
0425 1533	1	\$2,050.00	\$12,300.00	6.000	EA	N	INLETS, DT BOT, TYPE C, MOD, J BOT, <10'
0425 1541	13	\$2,474.17	\$269,685.07	109.000	EA	N	INLETS, DT BOT, TYPE D, <10'
0425 1542	1	\$4,039.42	\$4,039.42	1.000	EA	N	INLETS, DT BOT, TYPE D, >10'
0425 1543	3	\$3,812.32	\$19,061.60	5.000	EA	N	INLETS, DT BOT, TYPE D, J BOT, <10'
0425 1545	4	\$1,622.89	\$19,474.70	12.000	EA	N	INLETS, DT BOT, TYPE D, PARTIAL
0425 1549	6	\$2,843.65	\$73,934.98	26.000	EA	N	INLETS, DT BOT, TYPE D, MODIFY
0425 1551	7	\$2,247.62	\$143,847.60	64.000	EA	N	INLETS, DT BOT, TYPE E, <10'
0425 1553	1	\$5,300.00	\$5,300.00	1.000	EA	N	INLETS, DT BOT, TYPE E, J BOT, <10'
0425 1555	1	\$2,300.00	\$2,300.00	1.000	EA	N	INLETS, DT BOT, TYPE E, PARTIAL
0425 1559	1	\$3,395.61	\$23,769.27	7.000	EA	N	INLETS, DT BOT, TYPE E, MODIFY
0425 1561	2	\$3,157.33	\$9,472.00	3.000	EA	N	INLETS, DT BOT, TYPE F, <10'
0425 1563	1	\$4,200.00	\$4,200.00	1.000	EA	N	INLETS, DT BOT, TYPE F, J BOT, <10'
0425 1565	1	\$2,000.00	\$2,000.00	1.000	EA	N	INLETS, DT BOT, TYPE F, PARTIAL
0425 1571	1	\$3,400.00	\$3,400.00	1.000	EA	N	INLETS, DT BOT, TYPE G, <10'
0425 1581	6	\$2,947.68	\$44,215.27	15.000	EA	N	INLETS, DT BOT, TYPE H, <10'
0425 1589	2	\$11,875.00	\$23,750.00	2.000	EA	N	INLETS, DT BOT, TYPE H, MODIFY
0425 1609	1	\$13,155.00	\$13,155.00	1.000	EA	N	INLETS, DT BOT, TYPE J, MODIFY
0425 1701	7	\$2,781.78	\$130,743.47	47.000	EA	N	INLETS, GUTTER, TYPE S, <10'
0425 1703	1	\$3,200.00	\$3,200.00	1.000	EA	N	INLETS, GUTTER, TYPE S, J BOT<10'

Florida Department of Transportation
 Item Average Unit Cost
 From 2009/01/01 to 2009/12/31

Contract Type: ('CC') STATEWIDE
 Displaying: VALID ITEMS WITH HITS
 From: 0102 2 1 To: 9999999999

Item	No. of Conts	Weighted Average	Total Amount	Total Quantity	Unit Meas	Obs?	Description
0425 1465	2	\$2,937.50	\$11,750.00	4.000	EA	N	INLETS, CURB, TYPE J-6, PARTIAL
0425 1471	5	\$3,458.92	\$55,342.65	16.000	EA	N	INLETS, CURB, TYPE 7, <10'
0425 1479	1	\$2,862.00	\$2,862.00	1.000	EA	N	INLETS, CURB, TYPE 7, MODIFY
0425 1481	1	\$3,542.80	\$67,313.19	19.000	EA	N	INLETS, CURB, TYPE 8, <10'
0425 1483	5	\$8,000.00	\$40,000.00	5.000	EA	N	INLETS, CURB, TYPE 8, J BOT, <10'
0425 1501	3	\$3,600.00	\$14,400.00	4.000	EA	N	INLETS, DT BOT, TYPE A, <10'
0425 1505	1	\$2,100.00	\$2,100.00	1.000	EA	N	INLETS, DT BOT, TYPE A, PARTIAL
0425 1511	6	\$3,279.69	\$157,424.92	48.000	EA	N	INLETS, DT BOT, TYPE B, <10'
0425 1513	1	\$5,100.00	\$10,200.00	2.000	EA	N	INLETS, DT BOT, TYPE B, J BOT, <10'
0425 1514	2	\$6,666.67	\$20,000.00	3.000	EA	N	INLETS, DT BOT, TYPE B, J BOT, >10'
0425 1515	1	\$1,745.66	\$1,745.66	1.000	EA	N	INLETS, DT BOT, TYPE B, PARTIAL
0425 1521	36	\$2,216.32	\$500,888.90	226.000	EA	N	INLETS, DT BOT, TYPE C, <10'
0425 1522	2	\$2,062.60	\$4,125.20	2.000	EA	N	INLETS, DT BOT, TYPE C, >10'
0425 1523	5	\$3,922.28	\$27,455.95	7.000	EA	N	INLETS, DT BOT, TYPE C, J BOT, <10'
0425 1524	1	\$3,846.88	\$3,846.88	1.000	EA	N	INLETS, DT BOT, TYPE C, J BOT, >10'
0425 1525	5	\$1,987.50	\$19,875.00	10.000	EA	N	INLETS, DT BOT, TYPE C, PARTIAL
0425 1529	3	\$5,670.00	\$28,350.00	5.000	EA	N	INLETS, DT BOT, TYPE C, MODIFY
0425 1531	7	\$2,526.67	\$227,400.10	90.000	EA	N	INLETS, DT BOT, TYPE C, MOD, <10'
0425 1533	3	\$5,383.33	\$32,300.00	6.000	EA	N	INLETS, DT BOT, TYPE C, MOD, J BOT, <10'
0425 1541	29	\$2,549.27	\$410,433.23	161.000	EA	N	INLETS, DT BOT, TYPE D, <10'
0425 1542	1	\$3,060.00	\$3,060.00	1.000	EA	N	INLETS, DT BOT, TYPE D, >10'
0425 1543	7	\$3,704.89	\$85,212.58	23.000	EA	N	INLETS, DT BOT, TYPE D, J BOT, <10'
0425 1544	1	\$5,485.00	\$21,940.00	4.000	EA	N	INLETS, DT BOT, TYPE D, J BOT, >10'
0425 1545	3	\$3,436.67	\$10,310.00	3.000	EA	N	INLETS, DT BOT, TYPE D, PARTIAL
0425 1547	2	\$3,103.45	\$90,000.00	29.000	EA	N	INLETS, DT BOT, TYPE D, J BOT, <10', SPL
0425 1549	14	\$4,174.98	\$158,649.06	38.000	EA	N	INLETS, DT BOT, TYPE D, MODIFY
0425 1551	14	\$2,104.88	\$242,061.34	115.000	EA	N	INLETS, DT BOT, TYPE E, <10'
0425 1552	1	\$3,204.15	\$6,408.30	2.000	EA	N	INLETS, DT BOT, TYPE E, >10'
0425 1553	2	\$3,010.83	\$6,130.00	2.000	EA	N	INLETS, DT BOT, TYPE E, J BOT, <10'
0425 1554	2	\$3,600.00	\$7,200.00	2.000	EA	N	INLETS, DT BOT, TYPE E, J BOT, >10'
0425 1555	2	\$2,325.00	\$9,300.00	4.000	EA	N	INLETS, DT BOT, TYPE E, PARTIAL
0425 1557	1	\$2,500.00	\$2,500.00	1.000	EA	N	INLETS, DT BOT, TYPE E, J BOT, <10', SPL
0425 1559	4	\$2,085.33	\$18,768.00	9.000	EA	N	INLETS, DT BOT, TYPE E, MODIFY
0425 1561	10	\$3,037.08	\$63,778.65	21.000	EA	N	INLETS, DT BOT, TYPE F, <10'
0425 1565	2	\$1,281.10	\$5,124.40	4.000	EA	N	INLETS, DT BOT, TYPE F, PARTIAL



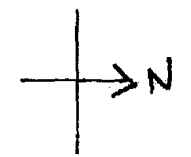
INLET # UP STREAM SECTION 0-4

JOB NAME: CITRONA DR. & SADDLER RD.

CONTRACTOR: UNITED BROTHERS

SPECIFICATIONS:

1. STEEL: BASE: #4 @ 8" O.C.E.W.
WALLS: 4 X 5 D4.2/D4.1 .224 STEEL AREA
2" CLEARANCE TO INSIDE FACE
2. CHAMFER EXPOSED EDGES 3/4"
3. 4,000 P. S. I. CONCRETE, TYPE II CEMENT
4. 2" X 2" X 1/4" ANGLE IRON GRATE SEAT



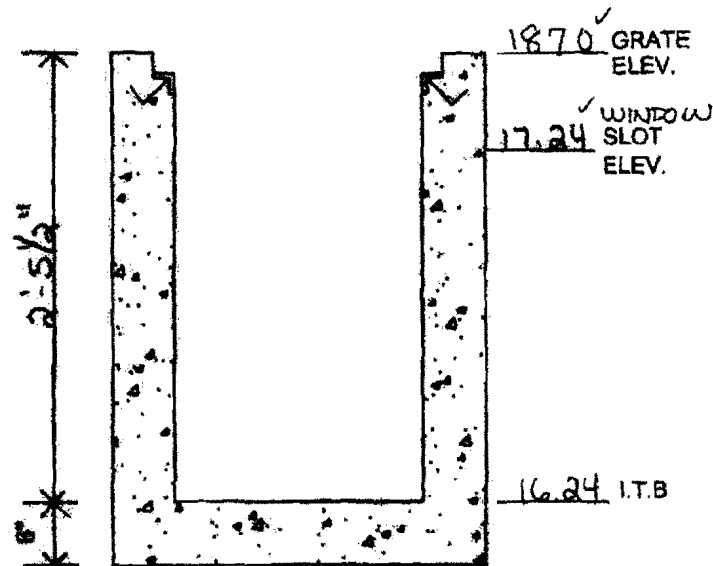
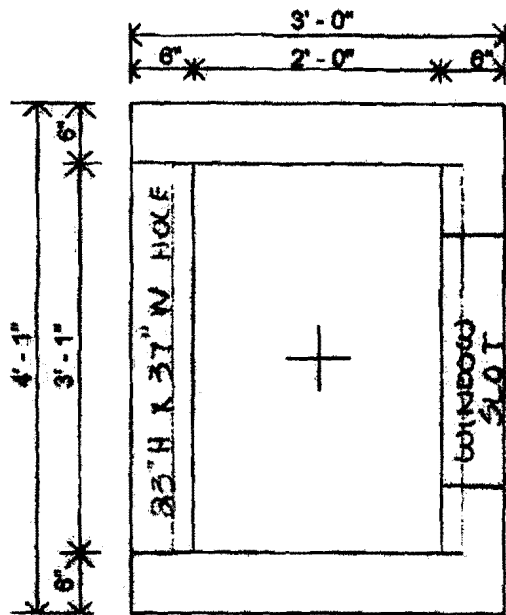
SCALE: 3/4" = 1'-0"

NOTES:

Add 2' wide slot at el. 17.7 on south side

APPROVED

NOTES	PC#	DESCRIPTION				READY DATE	SHIP DATE
	USF#	6212	TRAFFIC	"C" GRATE			
				RISER			
				RISER			
				RISER			
	1	2'-0 3/4"		BASE UNIT			
DIR	PIPE SIZE	PIPE INV.	HOLE SIZE	HOLE INV.	I.T.B. INV.	RAISE HOLE ABOVE I.T.B.	
N	12" x 18"	16.90	23" x 29"	16.44	16.44	0"	
S	slot	17.70	2'-0"		6" H	1'-3"	
STANDARD PRECAST, INC. STANDARD for QUALITY					PLATE D-207 TYPE "C" INLET		



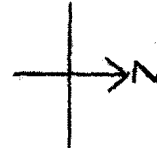
INLET # DOWN STREAM SECTION

JOB NAME: CITRONA DR. & SADDLER RD.

CONTRACTOR: UNITED BROTHERS

SPECIFICATIONS:

1. STEEL: BASE: #4 @ 6" O.C.E.W.
WALLS: 4 X 5 D4.2/D4.1 .224 STEEL AREA
2" CLEARANCE TO INSIDE FACE
2. CHAMFER EXPOSED EDGES 3/4"
3. 4,000 P. S. I. CONCRETE, TYPE II CEMENT
4. 2" X 2" X 1/4" ANGLE IRON GRATE SEAT



SCALE: 3/4" = 1'-0"

NOTES:

APPROVED						
NOTES	PC#	DESCRIPTION			READY DATE	SHIP DATE
	USF#	6212 TRAFFIC	"C" GRATE			
			RISER			
			RISER			
			RISER			
	1	2'-5 1/2"		BASE UNIT		
DIR	PIPE SIZE	PIPE INV.	HOLE SIZE	HOLE INV.	I.T.B. INV.	RAISE HOLE ABOVE I.T.B.
S	12" X 18"	16.70	23" X 37"	16.24	16.24	0"
N	6" PC	16.50	12"	16.35		1/8"
N	WINDOW SLOT	17.24	2'-0" W X	6" H		1'-0"
STANDARD PRECAST, INC. STANDARD for QUALITY					PLATE D-207 TYPE "C" INLET	